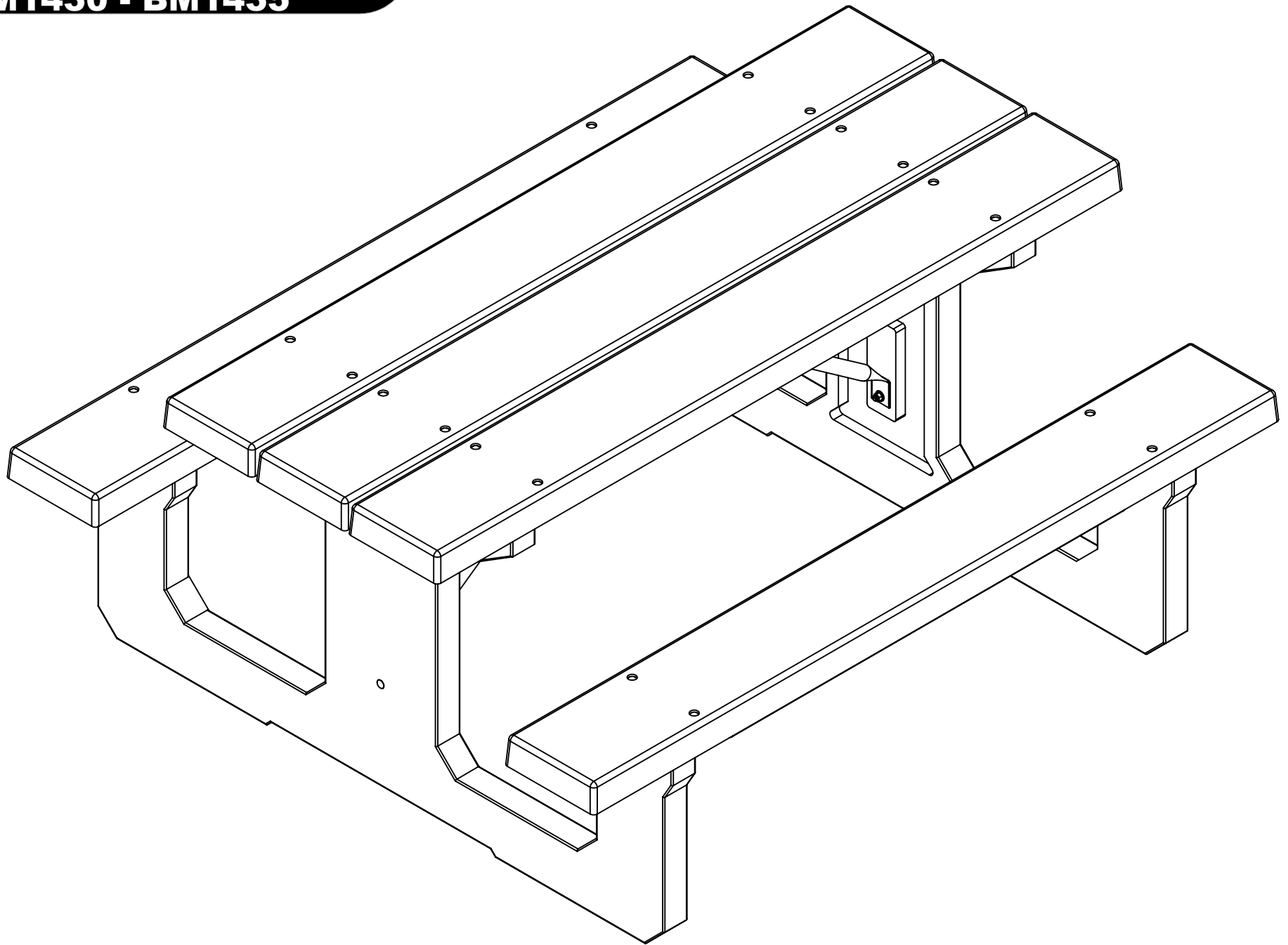
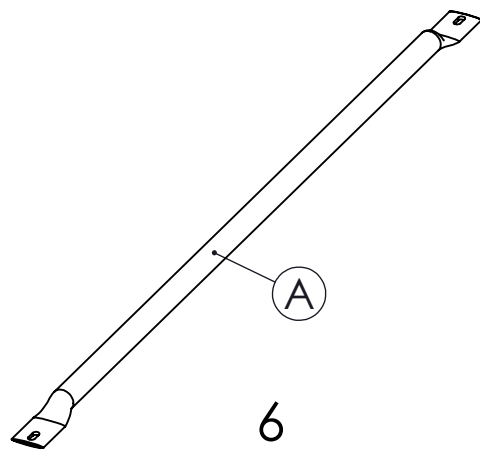


**Walk-Thru Table  
Instructions  
BM1430 - BM1435**

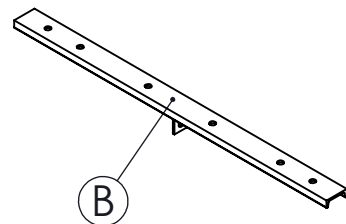
REV #2  
5/12/2023



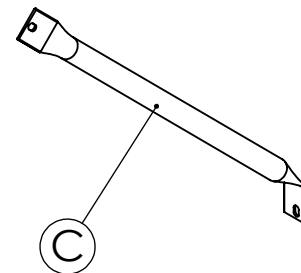
# Walk-Thru Table Instructions BM1430 - BM1435



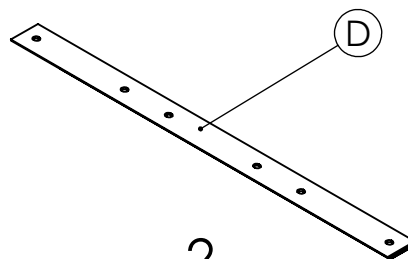
6  
SEAT AND TOP  
TUBE SUPPORT



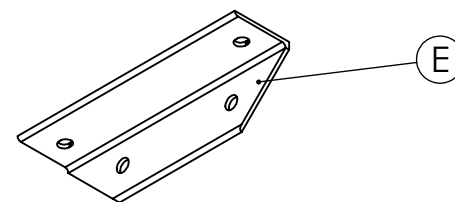
1  
23" CENTER CHANNEL



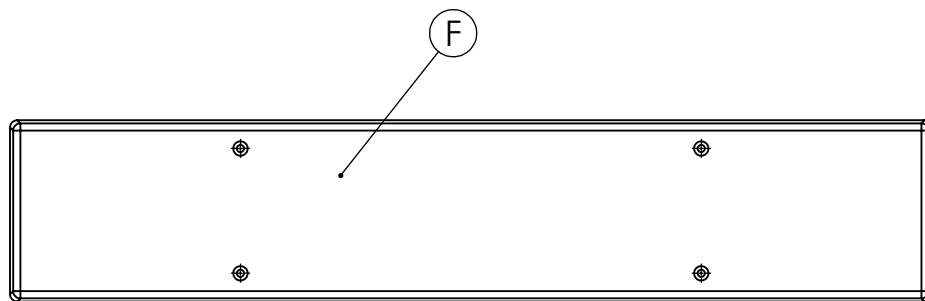
2  
ANGLE SUPPORT BRACES



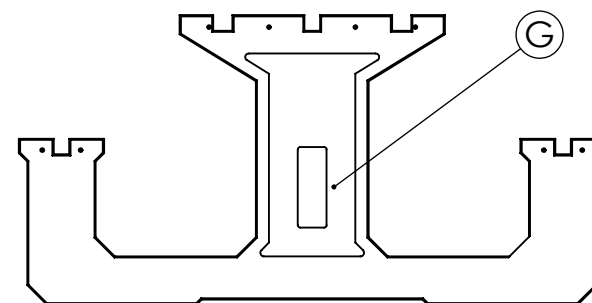
2  
TOP ANGLE BRACKET



4  
SEAT ANGLE BRACKET



5  
PLASTIC BOARDS



2  
PLASTIC END SUPPORT

## REQUIRED TOOLS (NOT INCLUDED)

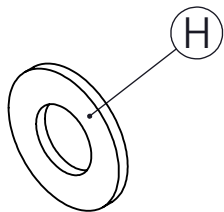
1 - 1/2" WRENCH  
1 - 1/2" SOCKET  
1 - 7/16" SOCKET  
1 - 1/8" DRILL BIT  
POWER DRILL

**NOTE: IT IS IMPORTANT TO KEEP ALL BOLTS FINGER TIGHT DURING ASSEMBLY UNTIL ENTIRE TABLE IS ASSEMBLED**

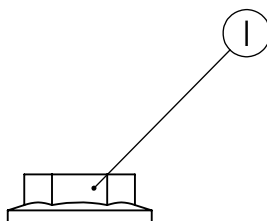
**HARDWARE &  
TOOLS REQUIRED  
FOR ASSEMBLY**

**2/8**

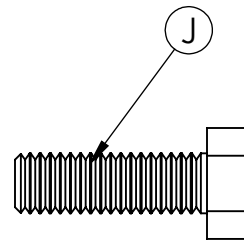
# Walk-Thru Table Instructions BM1430 - BM1435



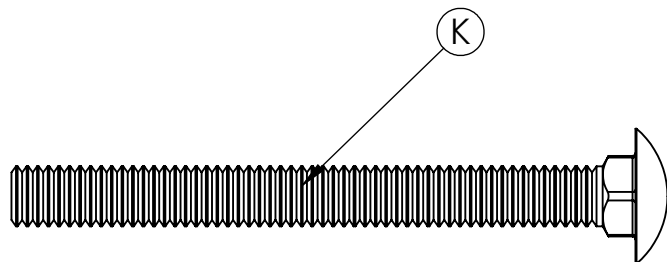
8  
EXTRA THICK WASHER



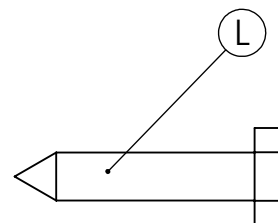
23  
5/16" FLANGE NUT



1  
5/16-18 X 1" HEX BOLT



22  
5/16-18" X 3.25" CARRIAGE BOLT

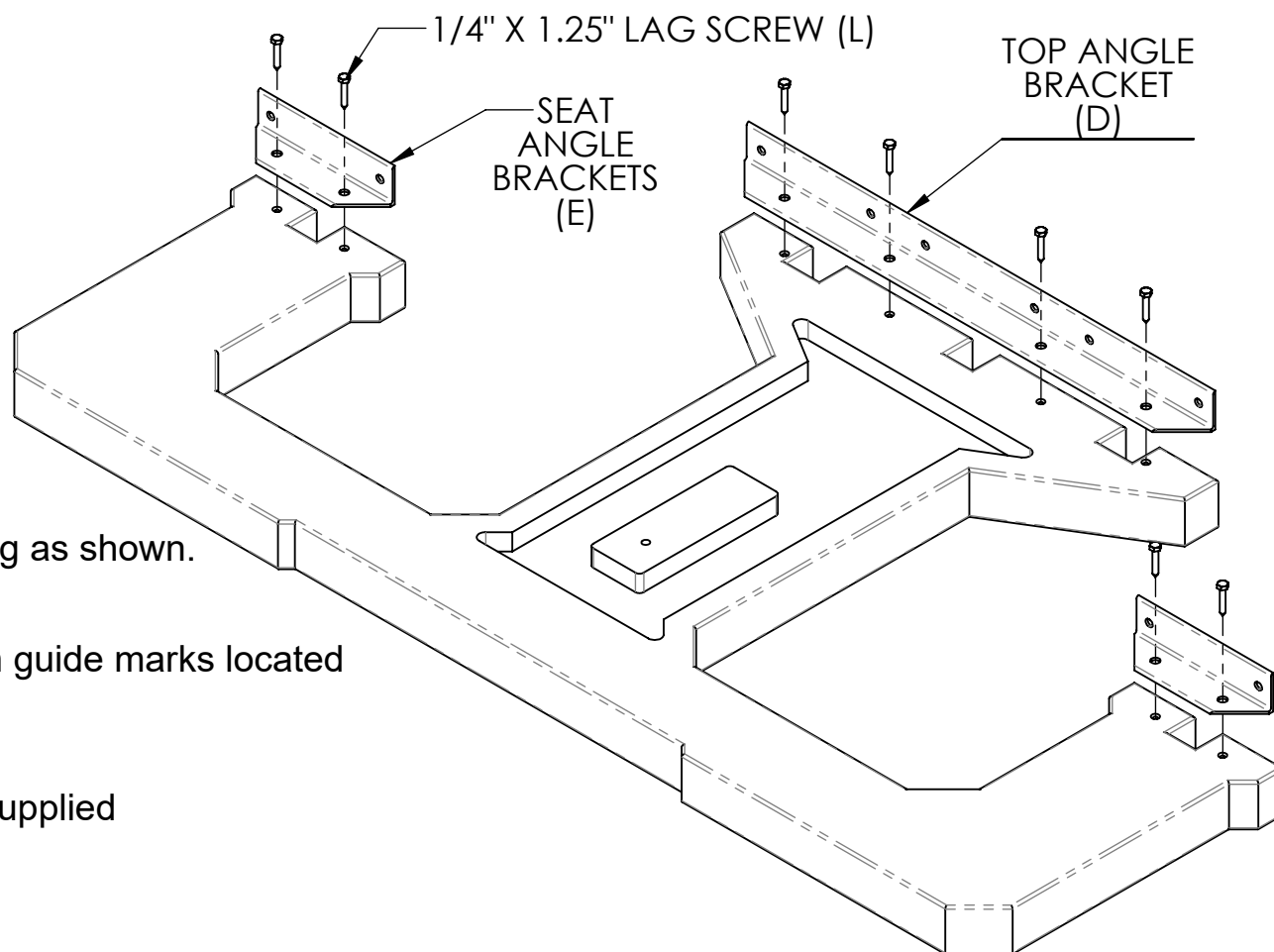


22  
1/4" X 1.5" LAG SCREW

**Walk-Thru Table  
Instructions  
BM1430 - BM1435**

# **ATTENTION!**

BEFORE STARTING TABLE ASSEMBLY, PLEASE ATTACH ANGLE BRACKETS TO TABLE LEGS AS SHOWN BELOW.



**Step 1**

Place angle brackets onto table leg as shown.

**Step 2**

Align holes on angle brackets with guide marks located on table leg.

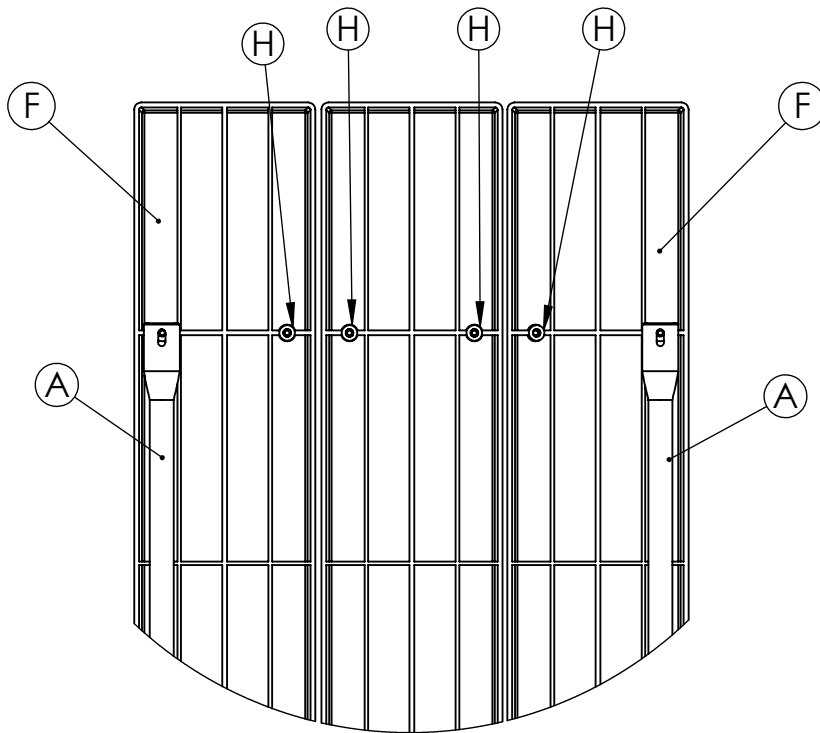
**Step 3**

Fasten angle brackets using the supplied 1/4" x 1.25" Lag Screws.

# Walk-Thru Table Instructions BM1430 - BM1435

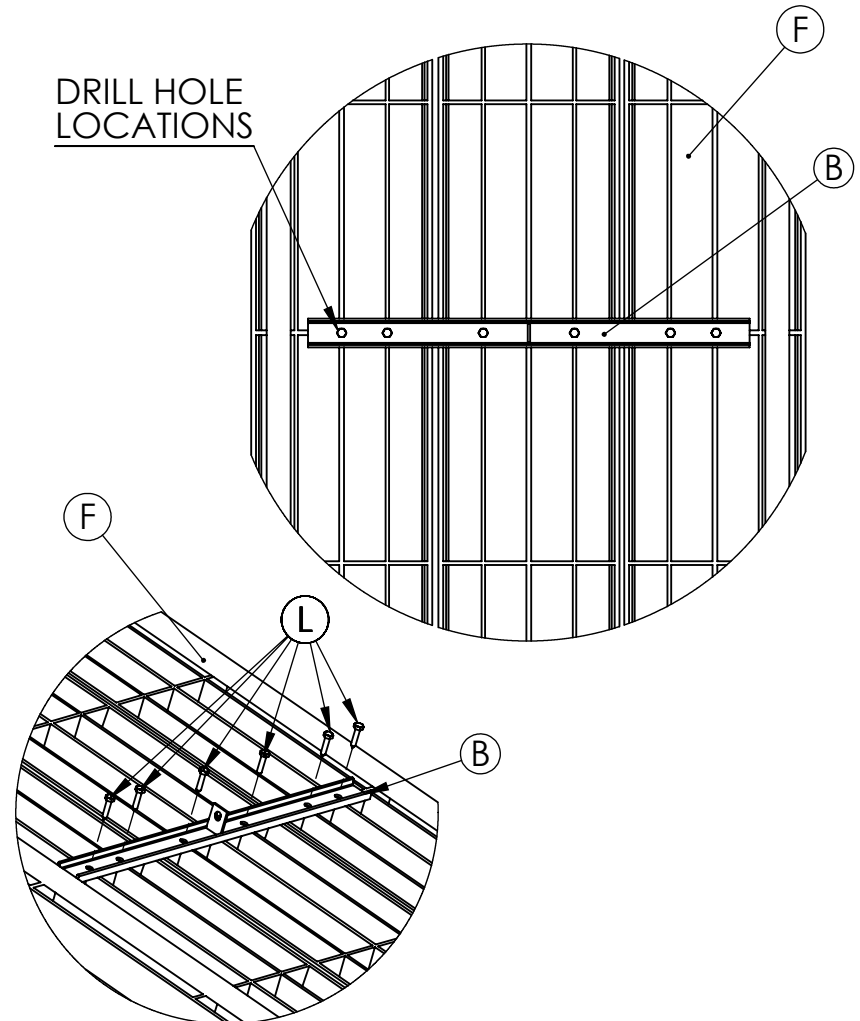
## STEP #1 Tabletop Assembly

- Lay 3 boards (F) top side down on a flat clean surface
- Insert twelve 3-1/2" x 5/16" (K) carriage bolts into the holes from the face of the board
- Insert 8 thick washers (H) on the 4 center bolts on each end
- Add tubes (A) on to the outermost bolts with tubes laying flat against boards.



## STEP #2 Tabletop Assembly

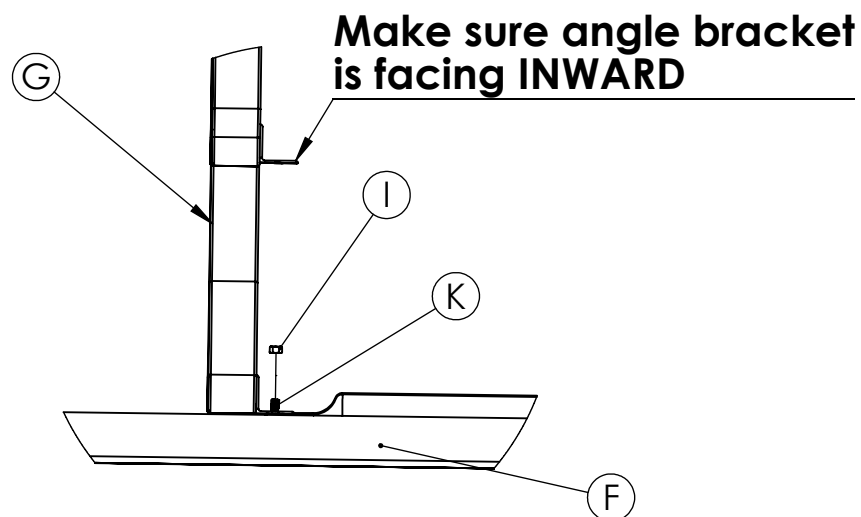
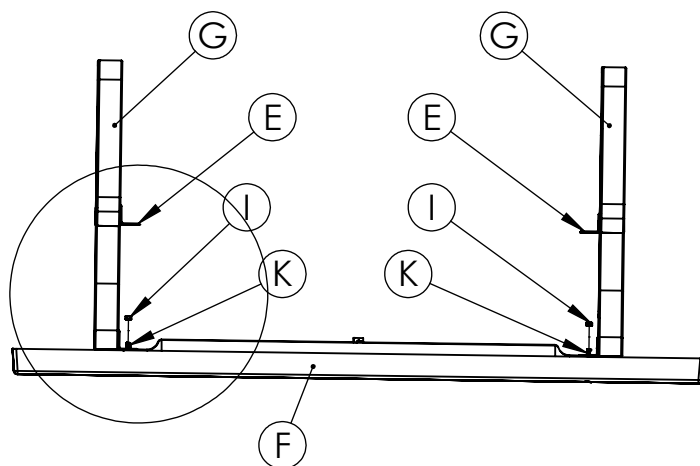
- Lay the 23" center channel (B) in the center of the tabletop assembly
- Drill 6 additional 1/8" pilot holes 1/2" deep in the center of the cross section of the boards at the hole locations in the 23" channel
- With six 1-1/4" x 1/4" lag screws (L) secure the 23" center channel to the boards.



# Walk-Thru Table Instructions BM1430 - BM1435

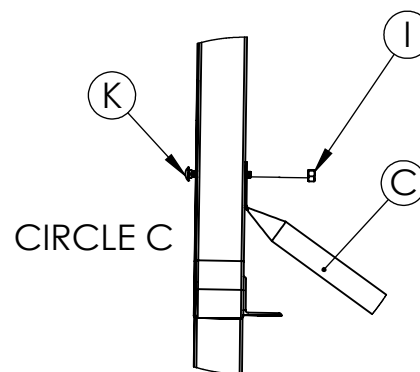
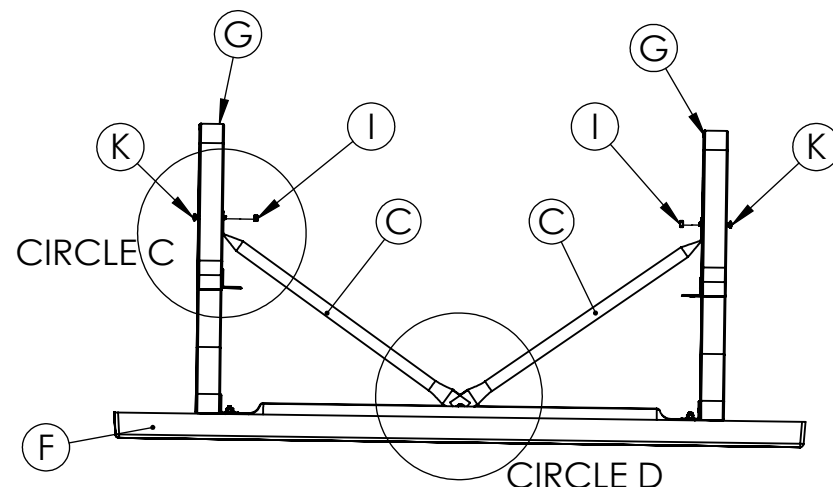
## STEP #3 Installing Plastic End Supports

- Take plastic end supports with the angle brackets attached, flip them upside down and onto the tabletop assembly of boards, thick washers, and top tube supports
- Hand tighten the ends onto the boards with 5/16" flange nuts (I)

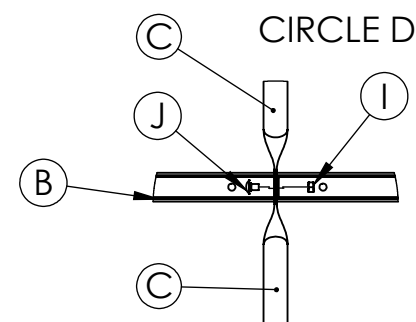


## STEP #4 Installing angle support brace

- Place a 5/16" x 1" hex bolt (H) through the two angle support braces and 23" center channel
- Hand tighten with a flange nut (J) See CIRCLE C
- Attach the angle support braces to the steel frames with 5/16" x 1" hex bolts (H) See CIRCLE D



Angle support brace connection to plastic end support

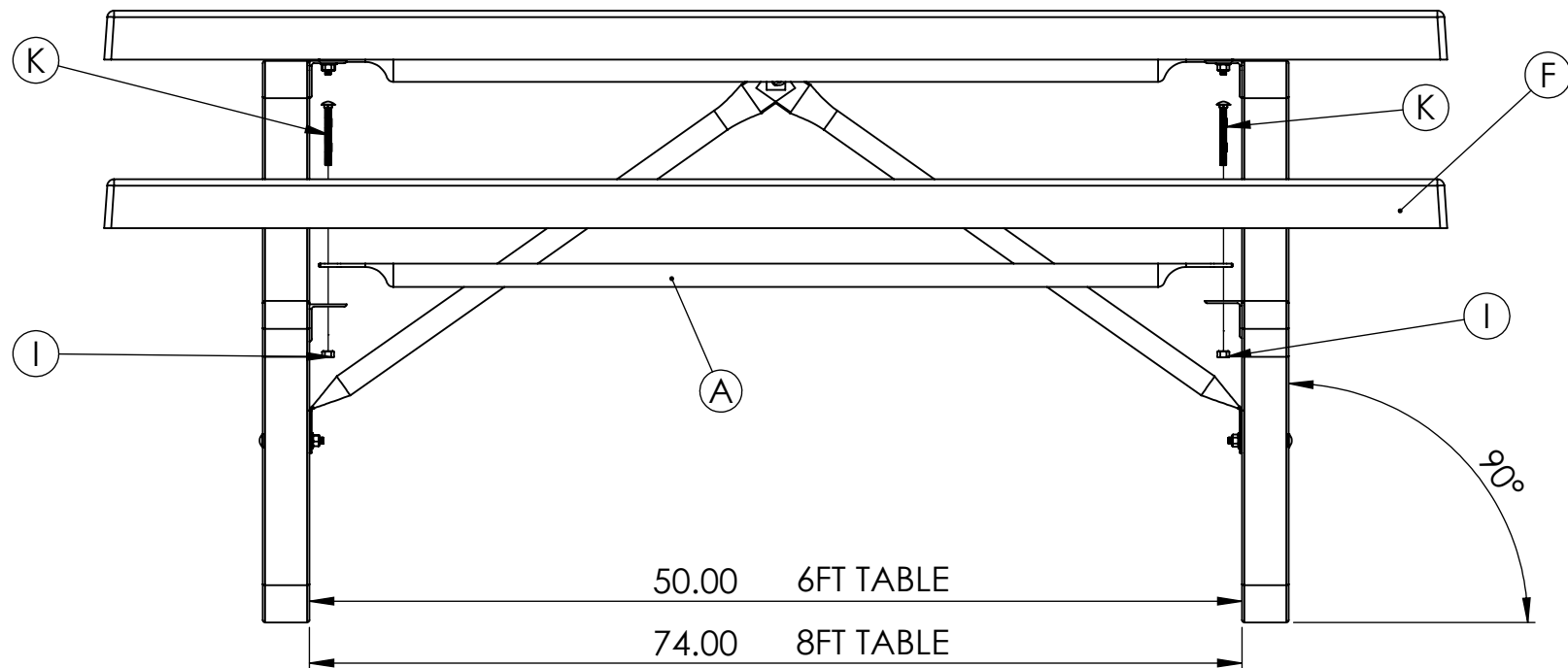


Angle support brace connection to center channel

# Walk-Thru Table Instructions BM1430 - BM1435

## STEP #5 Installing seats

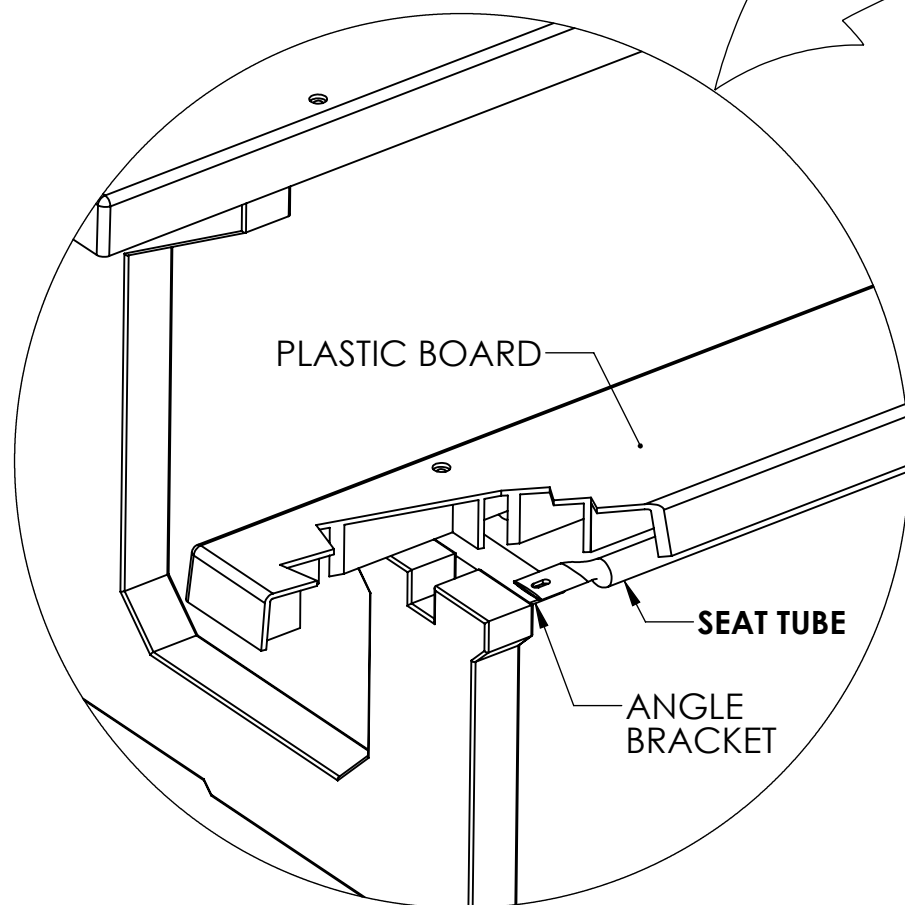
- With two people, carefully flip the table over
- Place 2 seat supports (A) over the two seat angle pieces (E) located on the plastic ends
- Place a board (F) over the supports. Align the holes of the plastic board up with the seat angle bracket (E)
- Place a 5/16" – 18 x 3.25" carriage bolt (K) through the holes on the board, through the seat support, then through the seat angle bracket and secure with a 5/16" flange nut.(I) See next page for more detail.
- Repeat this step on the opposite seat area.
- Make sure plastic table legs are square and plastic boards are aligned with each other and tighten all bolts and nuts.



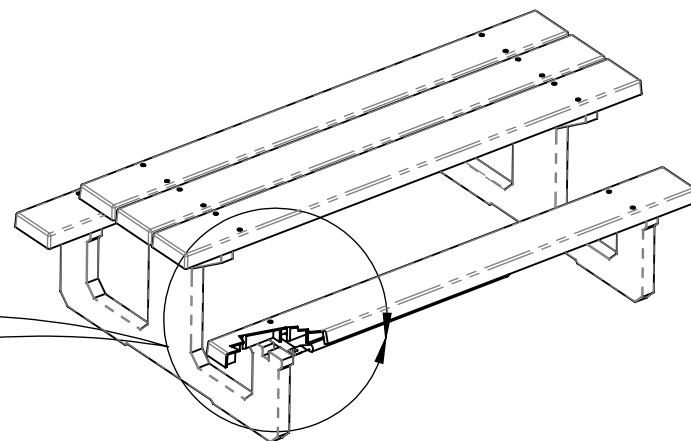
# WALK-THRU TABLE SEAT CROSS-SECTION

NOTE: WHEN INSTALLING PLASTIC BOARDS AND SEAT TUBES, THE SEAT TUBE SHOULD BE ATTACH ON THE TOP SIDE OF THE ANGLE BRACKET FOLLOWED BY THE PLASTIC BOARD AS SHOWN.

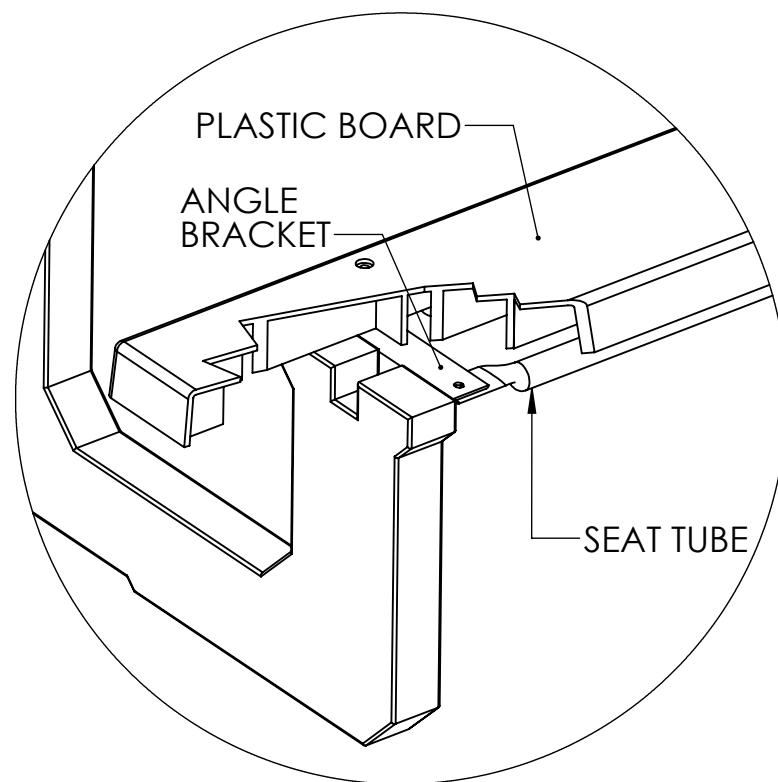
## CORRECT



PLACE SEAT TUBE **ON TOP OF** ANGLE BRACKET, THEN PLACE PLASTIC BOARD **ON TOP OF** SEAT TUBES AS SHOWN IN THE ILLUSTRATION ABOVE.

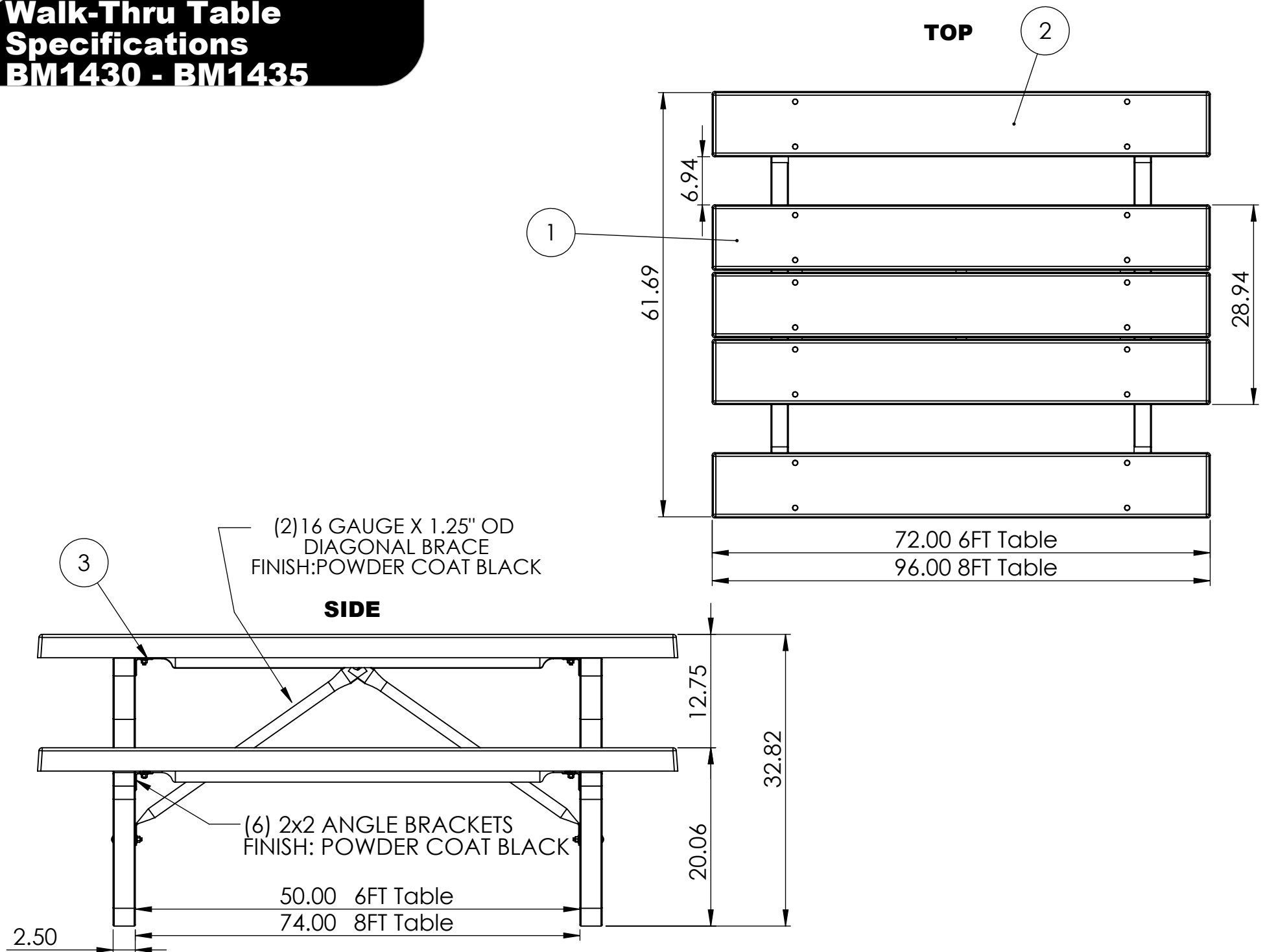


## INCORRECT





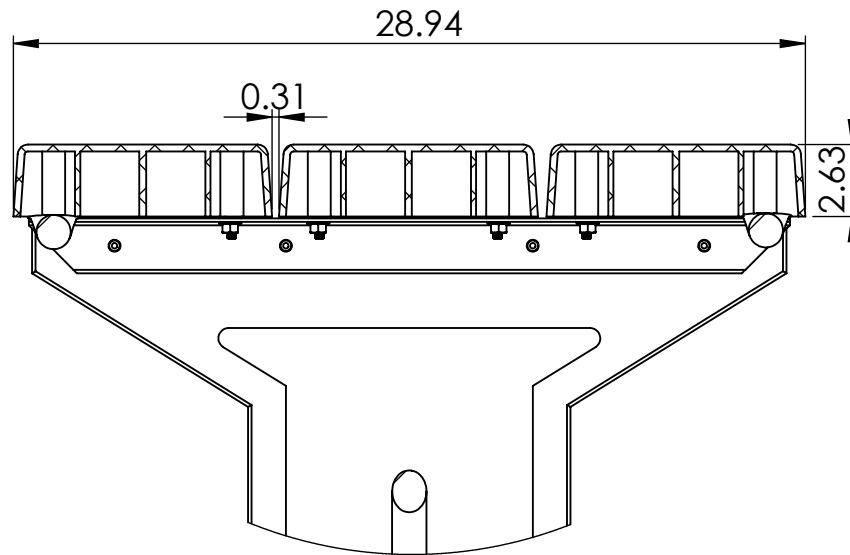
# Walk-Thru Table Specifications BM1430 - BM1435



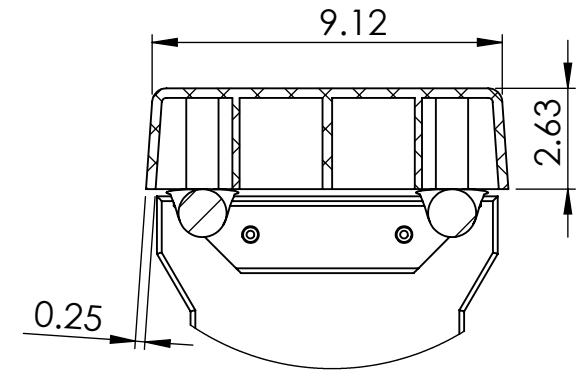
ALL DIMENSIONS ARE SHOWN IN INCHES

# Walk-Thru Table Specifications BM1430 - BM1435

REV #2  
5/12/2023

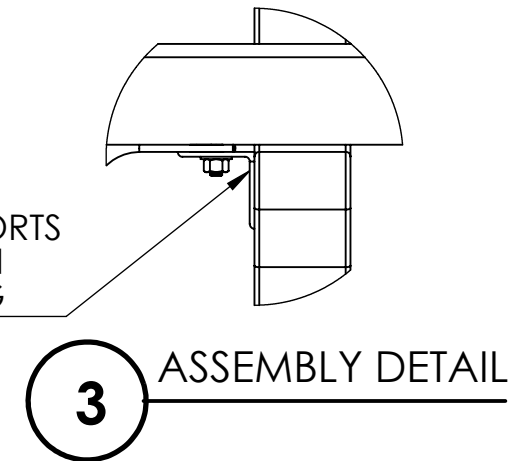


**1** TABLE TOP DETAILS



**2** SEAT DETAILS

ANGLE SUPPORTS  
INSTALLED ON  
INSIDE OF LEG



**3** ASSEMBLY DETAIL

HARDWARE: STAINLESS STEEL  
CONSTRUCTION MATERIALS: POWDER COATED METAL, PLASTIC